

Geochain Slim Rigid Inter-Tool Cable



Main Features

- Standard 7 conductor wireline with GO7 connection.
- The wiring between cable heads is enclosed in an Armour casing, designed for hostile well environments.
- Larger spacing can be achieved by connecting multiple RITC 31 with a long female to female coupler (RITC 40) in between each RITC 31.
- Up to >50' (15m) tool separation (25ft per RITC).

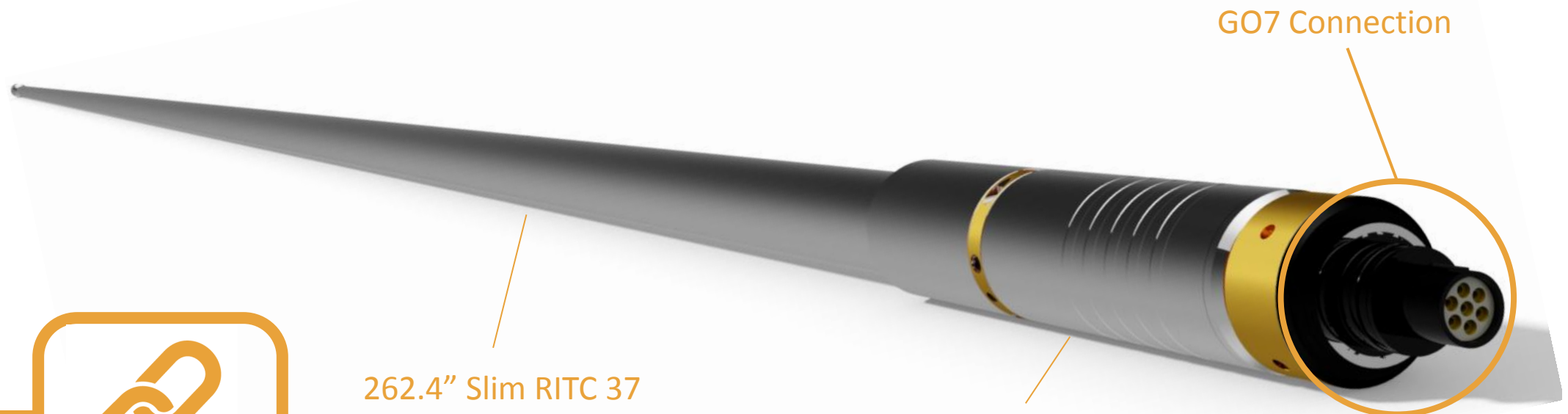
Functionality

- The SRITC is a modular rigid connecting system for use with analogue or digital Geochain tools. It allows the tools to be deployed in highly deviated or horizontal wells with precise alignment of all the locking arms.
- A knuckle joints can be used to provide flexibility. A single knuckle joint can be used or a pair fitted above and below the rigid section.

LEADERS IN BOREHOLE SEISMIC TECHNOLOGY

Specifications	RITC 37	RITC 40 (Coupler)
Length	262.4" (6664mm)	34.96" (888mm)
Cable Head Diameter	1 11/16" (43mm)	1 11/16" (43mm)
Temperature	400°F (205°C)	400°F (205°C)
Pressure	20,000 psi (1400 bar)	20,000 psi (1400 bar)
Weight		

Weak Link Specifications No Weak Links



Compatible with



262.4" Slim RITC 37

RITC 40 coupler